



**REGIONAL SPECIALISED METEOROLOGICAL CENTRE-TROPICAL CYCLONES, NEW DELHI
TROPICAL WEATHER OUTLOOK**

DEMS-RSMC SPECIAL TROPICAL CYCLONES NEW DELHI DATED 02.12.2022

TROPICAL WEATHER OUTLOOK FOR NORTH INDIAN OCEAN (THE BAY OF BENGAL AND THE ARABIAN SEA) VALID FOR NEXT 120 HOURS ISSUED AT 0600 UTC OF 02.12.2022 BASED ON 0300 UTC OF 02.12.2022.

BAY OF BENGAL:

A CYCLONIC CIRCULATION IS LIKELY TO EMERGE INTO SOUTH ANDAMAN SEA AROUND 4th DECEMBER, 2022. UNDER ITS INFLUENCE, A LOW PRESSURE AREA IS LIKELY TO FORM OVER SOUTHEAST BAY OF BENGAL AND ADJOINING SOUTH ANDAMAN SEA BY 5TH DECEMBER. IT IS LIKELY TO MOVE WEST-NORTHWESTWARDS AND CONCENTRATE INTO A DEPRESSION OVER SOUTHEAST BAY OF BENGAL BY 7TH MORNING. THEREAFTER, IT IS LIKELY TO CONTINUE TO MOVE WEST-NORTHWESTWARDS AND REACH NEAR NORTH TAMILNADU, PUDUCHERRY AND ADJOINING SOUTH ANDHRA PRADESH COASTS BY 8TH DECEMBER MORNING.

SCATTERED TO BROKEN LOW AND MEDIUM CLOUDS WITH EMBEDDED INTENSE TO VERY INTENSE CONVECTION LAY OVER ANDAMAN SEA. SCATTERED LOW AND MEDIUM CLOUDS WITH EMBEDDED MODERATE TO INTENSE CONVECTION LAY OVER CENTRAL & SOUTH BAY OF BENGAL.

PROBABILITY OF CYCLOGENESIS (FORMATION OF DEPRESSION) DURING NEXT 120 HRS:

24 HOURS	24-48 HOURS	48-72 HOURS	72-96 HOURS	96-120 HOURS
NIL	NIL	NIL	LOW	MOD

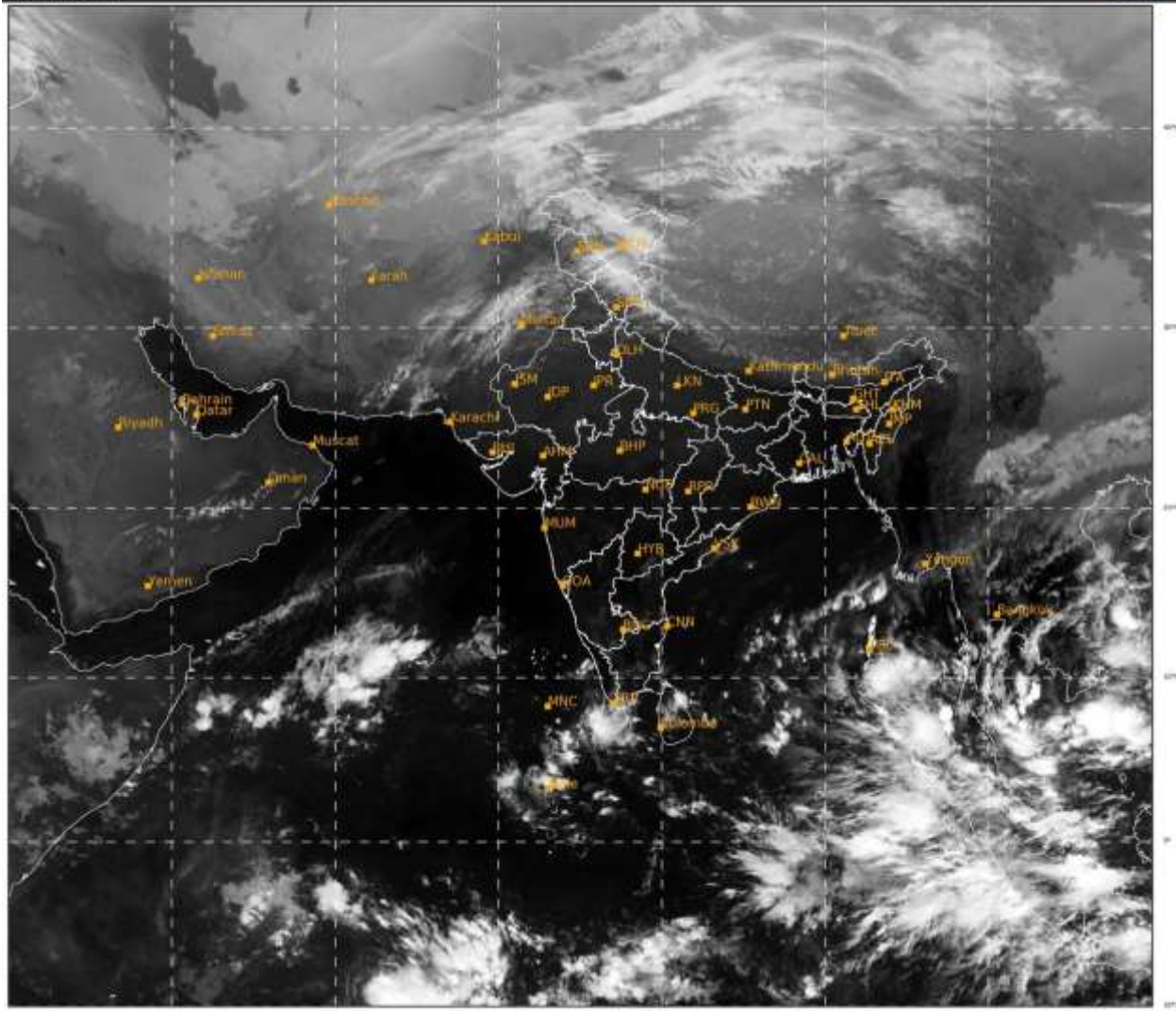
ARABIAN SEA:

SCATTERED TO BROKEN LOW AND MEDIUM CLOUDS WITH EMBEDDED INTENSE TO VERY INTENSE CONVECTION LAY OVER SOUTHWEST ARABIAN SEA AND COMORIN AREA. SCATTERED LOW AND MEDIUM CLOUDS WITH EMBEDDED MODERATE TO INTENSE CONVECTION LAY OVER CENTRAL & SOUTHEAST ARABIAN SEA AND ISOLATED WEAK TO MODERATE CONVECTION LAY OVER NORTHWEST ARABIAN SEA.

PROBABILITY OF CYCLOGENESIS (FORMATION OF DEPRESSION) DURING NEXT 120 HRS:

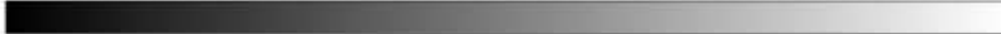
24 HOURS	24-48 HOURS	48-72 HOURS	72-96 HOURS	96-120 HOURS
NIL	NIL	NIL	NIL	NIL

Remarks: NIL



513

943



IMD, DELHI

Cloud distribution: (a) Isolated: <25%, Scattered:25-50%, Broken: 51-75%, Solid:>75%, Convection Intensity: (a) Weak: Cloud Top Temperature (CTT) >-25°C, (b) Moderate: CTT: - 25°C to -40°C, (c) Intense: CTT: - 41°C to -70°C and (d) Very Intense: : Less than -70°C
PROBABILITY OF CYCLOGENESIS (FORMATION OF DEPRESSION): NIL: 0%, LOW: 1-33%, , MODERATE: 34-66% AND HIGH: 67-100%
This is a guidance Bulletin for WMO/ESCAP Panel Member countries. Visit respective National websites for Country specific Bulletins